



30 years of bringing green ideas to LIFE

# LIFE GreenYourRoute



LIFE is 30

Dr. Georgios K.D. Saharidis



The Project.....	03
The scope.....	04
The objectives.....	05
The expected impact.....	06
EU policy.....	07
The app.....	08-11

# Table of content

**30 years of bringing green ideas to LIFE**



## The Project

PROJECT LOCATION: Greece, Czech Republic, Italy

BUDGET INFO: Total amount: €2,191,237, % EC Co-funding: 60%, Green Fund: 4,2%

DURATION: Start: 01/09/18 - End: 31/03/23

Coordinating Beneficiary:

University of Thessaly, Greece

Associated Beneficiaries:

Athinaiki Metaforiki S.A., Greece, Central European Data Agency, a.s., Czech Republic

CHAPS spol. s.r.o., Czech Republic, Itaca S.R.L., Italy, Militos Consulting S.A., Greece,

Koukouzelis O.E., Greece, Plus Metaforiki, Greece

**30 years of bringing green ideas to LIFE**



## Scope

LIFE GreenYourRoute (LIFE GYR) is an innovative logistics platform for last mile delivery of goods in urban environments developed within a multidisciplinary approach of environmental engineering, computer science and operation research.



**30 years of bringing green ideas to LIFE**



## Objectives

- Reduce GHG and non-GHG emissions, by solving Green-VRPs;
- Demonstrate that environmental friendly routing is also cost-saving;
- Establish a sustainable GYR Company, also apply for ETV for GYR service;
- Develop a significant network of customers for GYR Company in EU through regular dissemination activities and workshops;
- Organize workshops and webinars that bring together SMEs and scientists around the issue of sustainable urban mobility;
- Systematically monitor the environmental and socio-economic impact of the 5 demonstrators in 3 different EU countries that participate in the project.

**30 years of bringing green ideas to LIFE**



## Expected Impact

- Yearly emission savings of routing operations of 5 demonstrators equal to: 42.255tn NO<sub>x</sub>, 4.632tn of PM, 73.133tn of CO, 1.869tn of NH<sub>3</sub>, 8,885.697tn of CO<sub>2</sub>, 8.939tn of CH<sub>4</sub>, 10.564tn of VOC and 8.129tn of SO<sub>2</sub>;
- LIFE GYR integration to at least 3 additional SMEs;



**30 years of bringing green ideas to LIFE**



## EU policy

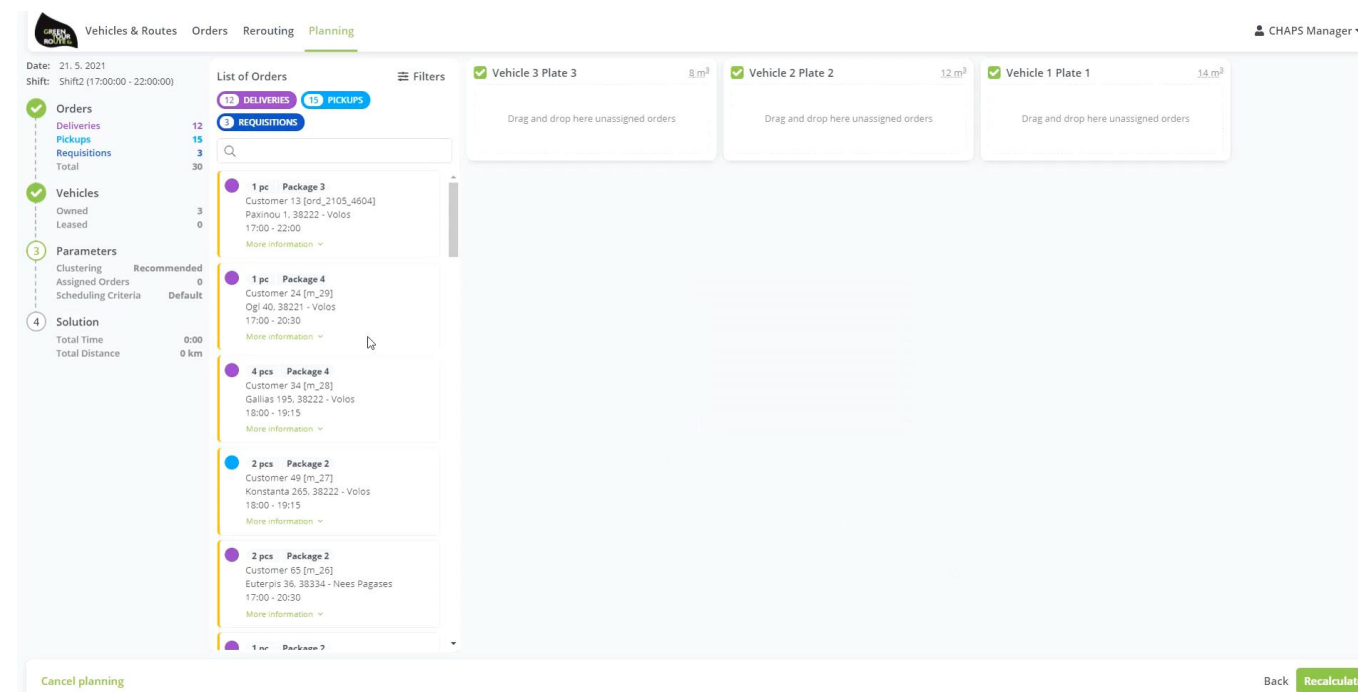
Support the national (Greece) board of logistics and supply chain to revise 4302/2014 to the part related to green logistics;



**30 years of bringing green ideas to LIFE**



# The app



30 years of bringing green ideas to LIFE





# The app

The screenshot shows a web-based planning application interface. At the top, there are navigation tabs: 'Vehicles & Routes', 'Orders', 'Rerouting', and 'Planning'. The 'Planning' tab is active. Below the tabs, the date is '21.5.2021' and the shift is 'SHIF2 (17:00:00 - 22:00:00)'. On the left side, there are three main sections: 'Orders', 'Vehicles', and 'Parameters'. The 'Orders' section shows 12 Deliveries, 15 Pickups, 3 Requisitions, and a Total of 30. The 'Vehicles' section shows 3 Owned and 0 Leased. The 'Parameters' section shows Clustering Recommended, Assigned Orders 0, and Scheduling Criteria Default. Below these sections, the 'Solution' is shown with a Total Time of 0:00 and a Total Distance of 0 km. The main area of the interface is a map with a grid overlay. A table is overlaid on the map, showing the details of three vehicles and their routes. The table has columns for Start, End, Distance (km), Total, Deliver., Pickups, Requir., and Driver. The data is as follows:

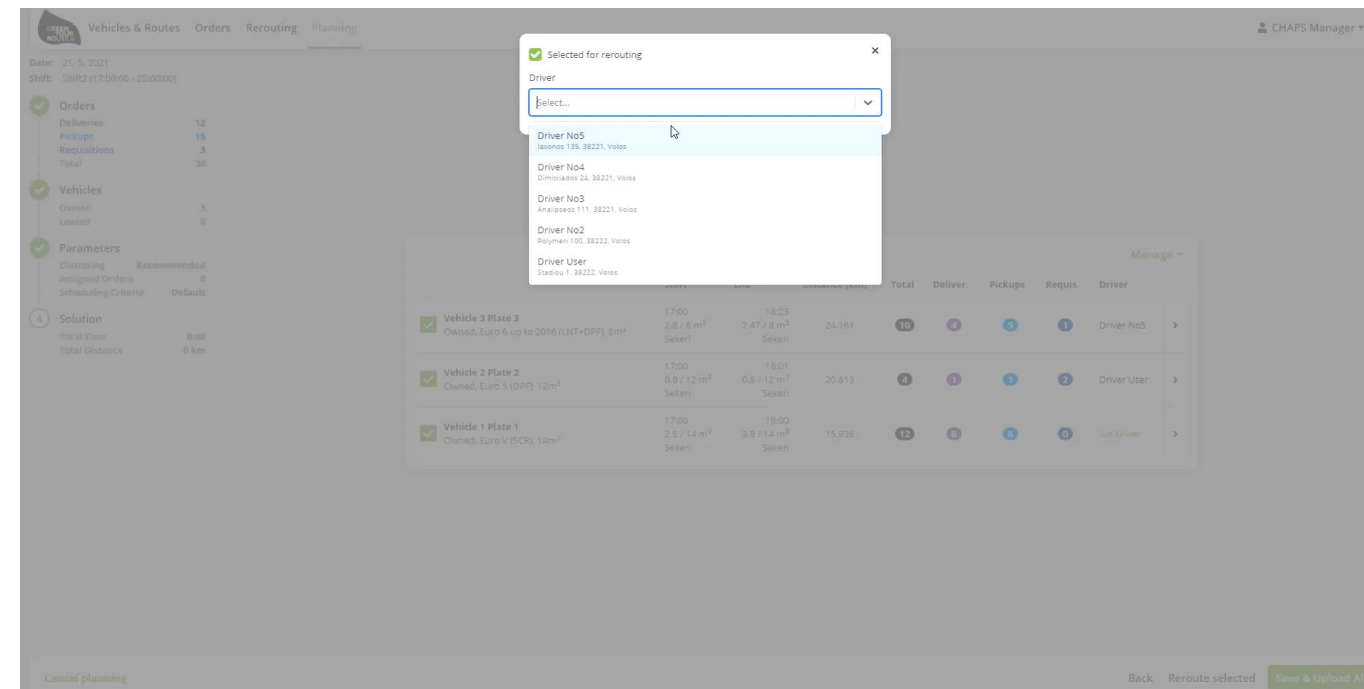
	Start	End	Distance (km)	Total	Deliver.	Pickups	Requir.	Driver
Vehicle 3 Plate 3 Owned, Euro 6 up to 2016 (LNT+DPF), 8m <sup>3</sup>	17:00 2,8 / 8 m <sup>3</sup> Sekani	18:09 1,67 / 8 m <sup>3</sup> Sekani	19,551	0	4	4	1	Set Driver >
Vehicle 2 Plate 2 Owned, Euro 5 (DPF), 12m <sup>3</sup>	17:00 1,04 / 12 m <sup>3</sup> Sekani	18:04 0,8 / 12 m <sup>3</sup> Sekani	21,196	0	2	1	2	Set Driver >
Vehicle 1 Plate 1 Owned, Euro V (SCR), 14m <sup>3</sup>	17:00 2,3 / 14 m <sup>3</sup> Sekani	18:01 4,6 / 14 m <sup>3</sup> Sekani	15,448	13	0	7	0	Set Driver >

At the bottom of the interface, there are buttons for 'Cancel planning', 'Back', 'Reroute selected', and 'Save & Upload All'.

30 years of bringing green ideas to LIFE



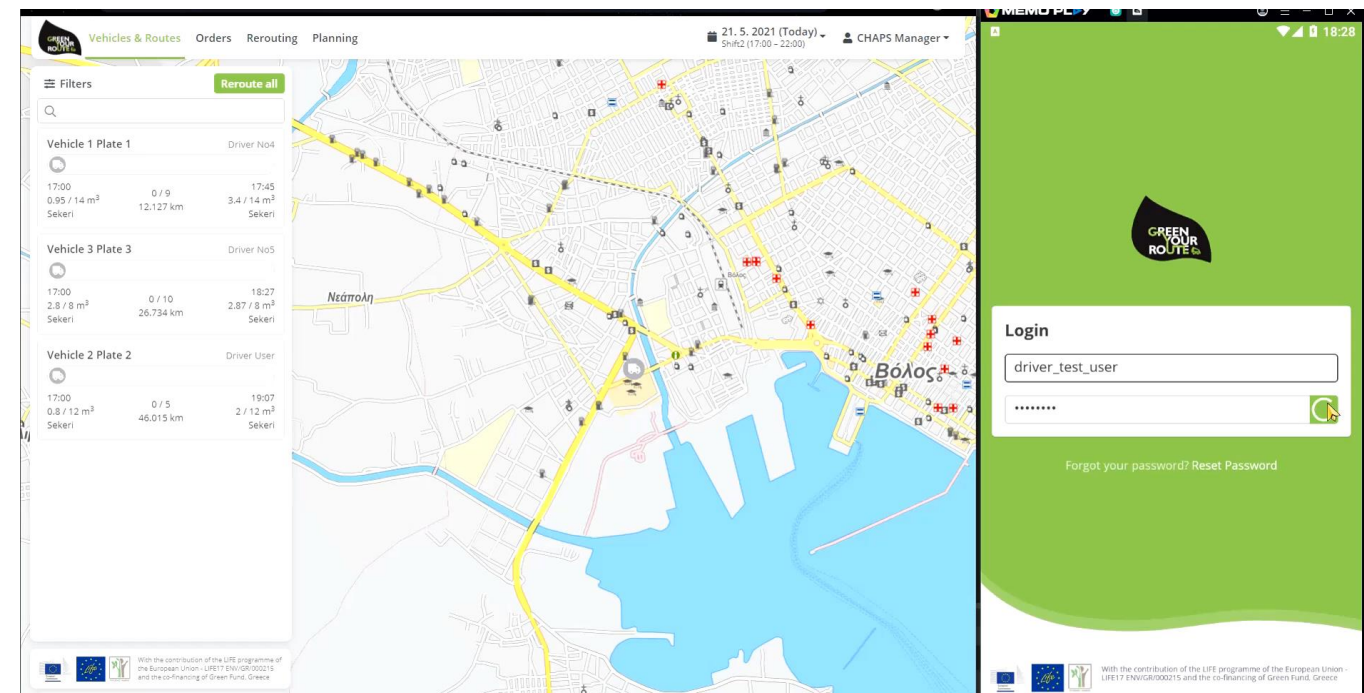
# The app



30 years of bringing green ideas to LIFE



# The app



30 years of bringing green ideas to LIFE



30 years of bringing green ideas to LIFE



# Thank You!



[www.greenyourroute.com](http://www.greenyourroute.com)



@greenyourroute